

# UBI Systems



Based On Standard Systems:



## Washing Systems

---

IBC washer

---

Hoses washer

---

Mobile CIP

---

Parts washer

---

Drum washer

## Flexible Hose Washer: Configuration

- 1 to 3 Flexible hoses at a time
- Internal wash
- Pre- wash
- Detergent wash
- Rinses
- Drying
- Conductivity Check
- Traceability
- BMS connection
- Printed ticket

3 Hose in 20 to 30 min

Options:

- *Steam sterilisation*
- *Connected to BMS*



## Wash Principle – Waters

### Water:

Purified Water

Towns Water

Hot Towns Water 85 C

### Which water is used in the process:

- Pre Rinse with Towns water COLD to drains
- Wash by filling the tank with detergent , recirculating through hoses to the tank
- Rinse with Towns water to drains
- Rinse with PURIFIED WATER to drains
- AIR Blast

## Detergent Dosing Units:

### How many Units:

- 25l drums
- Concentration 1% to 3%
- Dosed in the Tank



## Control Method:

---

MANUAL CONTROL OF THE PROCESS

---

Manual selection

---

PLC control

---

With recipes pre-programmed

---

Select recipe 1 or 2 or 3

---

HMI CONTROL OF THE PROCESS

---

HMI recipe selection and preparation

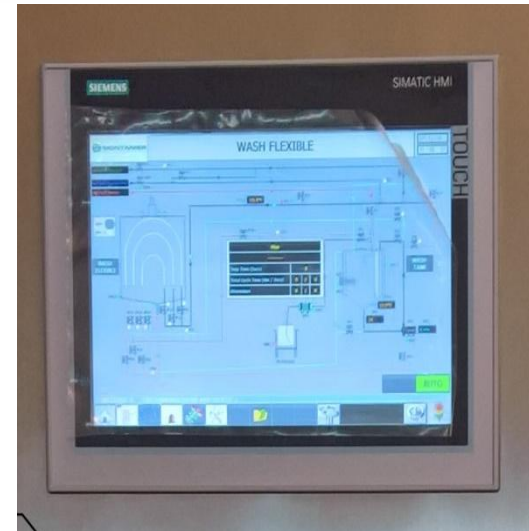
---

PLC control

---

Programmable recipes

---





## Operation: Setting Hoses

### Open Doors:

- Open Doors
- Set 1 to 3 hoses
- From 1m to 3.5 m

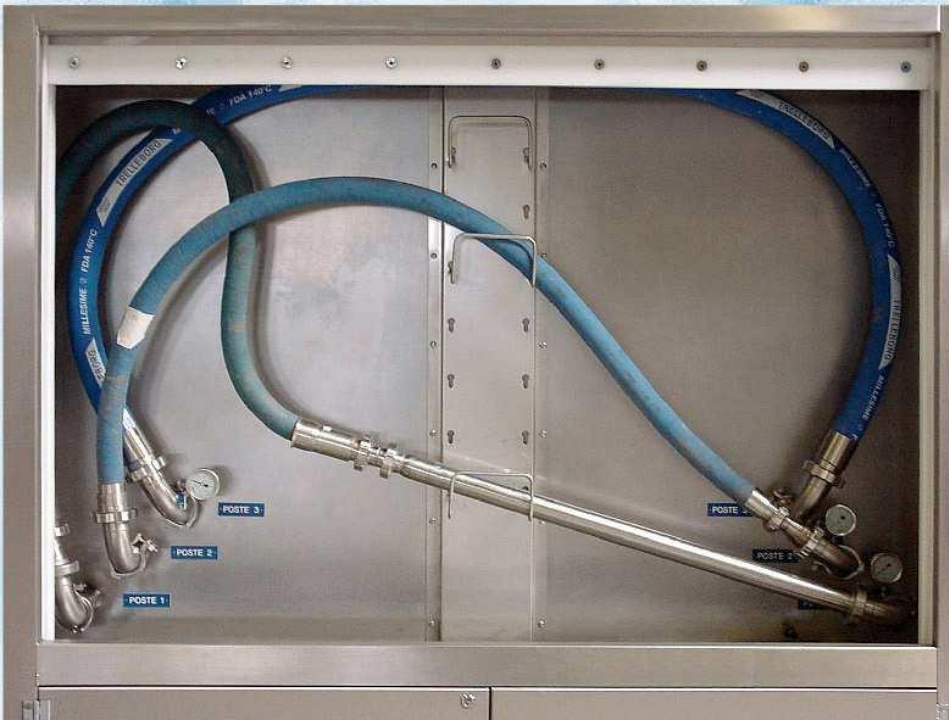
### Close Doors:

- Close Doors
- Select Recipe
- Start cycle





# Setting Hoses



**UBI Systems**

## Setting Hoses Connection:



## Flexible Hose Washer Main Benefits

Automatic  
Repeatable  
Validated process



## Typical Recipe:

- 1- Flush cycle with quick air purge and cold or hot softened water at 85 ° C , to drains.
- 2 – Washing Circulation of cold or hot softened water at 85 ° C with detergent in a closed loop – drain the buffer tank at end of operation
- 3 – First rinse, cold or hot softened water at 85 ° C, to drains.
- 4 – Disinfection cold or hot softened water at 85 ° C with detergent - then stays connected with the disinfectant in the hoses during a parameterized timer (+/-15')
- 5 – Second rinse with hot purified water to drains
- 6 – Air purge with sterile compressed air
- 8 – End of cycle « Green Light »
- 9 – Print ticket Operators print the wash ticket

# Services – Dimensions - Connection

*Dimension*                LxDxH: 2300 x 1000 x 2350 mm

*Doors aperture*        LxH: 1700 x 1150 mm

Pump 36 CM/hour or 45 CM/h at 2.2 Bar

*Water connection by flexible hose*

Soft water Cold :Diam.1"1/2 lg 1 m

Soft hot water 85° C Diam.1"1/2 lg 1 m

Purified hot water 85° C Diam.1"1/2 lg 1 m

Compressed Air dry 6-7 bar diam.3/4 lg 1 m

*Weight 880 KG when full of water with hoses*

*Electrical supply 3 phase + Neutral + Earth, 12 Kw*

## Wash Systems : Washroom Example





# Washing Systems Range



Parts washers



Drum washers



Hose Washer



Mobile Washers



IBC Washers



Wash Stations